

H 425
41

No. 37.

Ä

BUREAU OF NAVIGATION, HYDROGRAPHIC OFFICE.

COASTS

OF THE

MEDITERRANEAN SEA.

PART I.

S. AND SE. COASTS OF SPAIN, FROM MALA BAHIA TO CAPE CREUX,

BALEARIC ISLANDS,

AND

N. COAST OF AFRICA FROM CEUTA TO LA CALA.

TRANSLATED AND COMPILED BY
Lieutenant-Commander HENRY H. GORRINGE,
UNITED STATES NAVY.

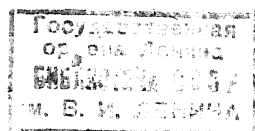
WASHINGTON:
GOVERNMENT PRINTING OFFICE.
1875.

70186

05087

Ä





Упр 20874-48.

ADVERTISEMENT.

The coasts of the Mediterranean Sea, Part I, is a compilation from the *Derrotero General del Mediterráneo*, tomo 1, Madrid, 1873; *Description Nautique des Côtes de l'Algérie*, Paris, 1850; and *Instructions Particulières pour les Bâtiments à Vapeur Naviguant sur les Côtes de l'Algérie*, Paris, 1852.

Some very valuable information has been obtained from the reports of British consuls at the ports comprised in this volume. The American Cyclopedia has been the chief source of such general information as has been found necessary; and a variety of official and private publications have been consulted and drawn from.

This work is a continuation of No. 23: *Winds, Currents, and Navigation of the Gulf of Cadiz, the Western Coast of the Spanish Peninsula, and the Strait of Gibraltar*. The navigation of the Mediterranean Sea, its winds and currents, are contained in No. 25: *General Examination of the Mediterranean Sea*.

R. H. W.

UNITED STATES HYDROGRAPHIC OFFICE,
Washington, D. C., October 1, 1875.

NOTICE.

All bearings and courses are *true* except where otherwise stated.

The direction of the wind is the point from which it blows; that of the current the point toward which it is setting.

Distances are expressed in nautical miles and cables. The latter is assumed to be equal to 100 fathoms.

Longitudes are reduced to the meridian of Greenwich.

LIST OF PLATES AND VIEWS.

No. of view.	Description.	Page.
1	Meca and Nueva towers ; Trafalgar light-house, S. 39° E., 6 miles.	XVII
2	Trafalgar light-house, N. 50° W., 7½ miles ; Meca heights and tower...	
3	Meca and Tajo towers ; Sierras Enmedio and Plata; Pope's Chair; Trafalgar light-house, S. 83° E., 5½ miles ; Zara	
4	Sierras Ubrique and Plata; Zara, N. 28° E., 6½ miles ; Cortijo; Plata cape and tower ; Gracia tower.....	
5	Trafalgar cape to Camarinal point; Gracia tower, N. 40° W., 9½ miles ..	XVII
6	Sierras St. Bartolomé and Enmedio ; Paloma point, N. 3° W., 3 miles ..	
7	View of the coast from the Cabezos	
8	Gibraltar straits. Tarifa light-house, S. 84° E., 7 miles	XX
9	Tarifa light-house, &c	
10	Gibraltar rock, N. 1° E., 9 miles	
11	Gibraltar straits. Europa point, S. 75° W., 19½ miles.....	266
12	Spartel cape, S. 10° E.	
13	Spartel cape, N. 8° E.	
14	Sierra Ballones, (Ape's hill). Tarifa light-house, S. 59° 30' E., 4½ miles.	8
15	Gibraltar straits. Europa point, S. 62° W.	
16	Ceuta. Almina light-house, S. 67° E., 6 miles.....	
17	View of Ceuta N. bay, from Ape's hill to Sta. Catalina castle.....	13
18	Sierras Estepona and Marbella.....	
20	Cala Burra light-house, S. 54° W., 7 miles; Fuengirola	
21	Granada peak. Velez Málaga point, N. 11° E., 9 miles.....	62
19	Málaga light-house and cathedral, in line.....	
22	Sierra Dalias; Cerillos tower, N. 46° W., 12 miles.....	
23	Mount Cope, N. 82° W., 16½ miles; Aguilos	67
24	Mazarron light-house, N. 7° W., 18 miles, showing adjacent mountains	
25	Subida cape ; Tiñosa light-house, N. 42 E., 21 miles.....	
26	Cartagena.....	112
27, 28	Cape Palos and Hormigas islets.....	
29	Benidorm islet and Cuchillada de Roldan, in line, N. 31° 30' W.....	
30	Mount Mongo; Denia; Cuchillada de Roldan.....	112
31	Cape San Antonio, N. 40° W., 12 miles.....	
32, 33	Colibre islands	