

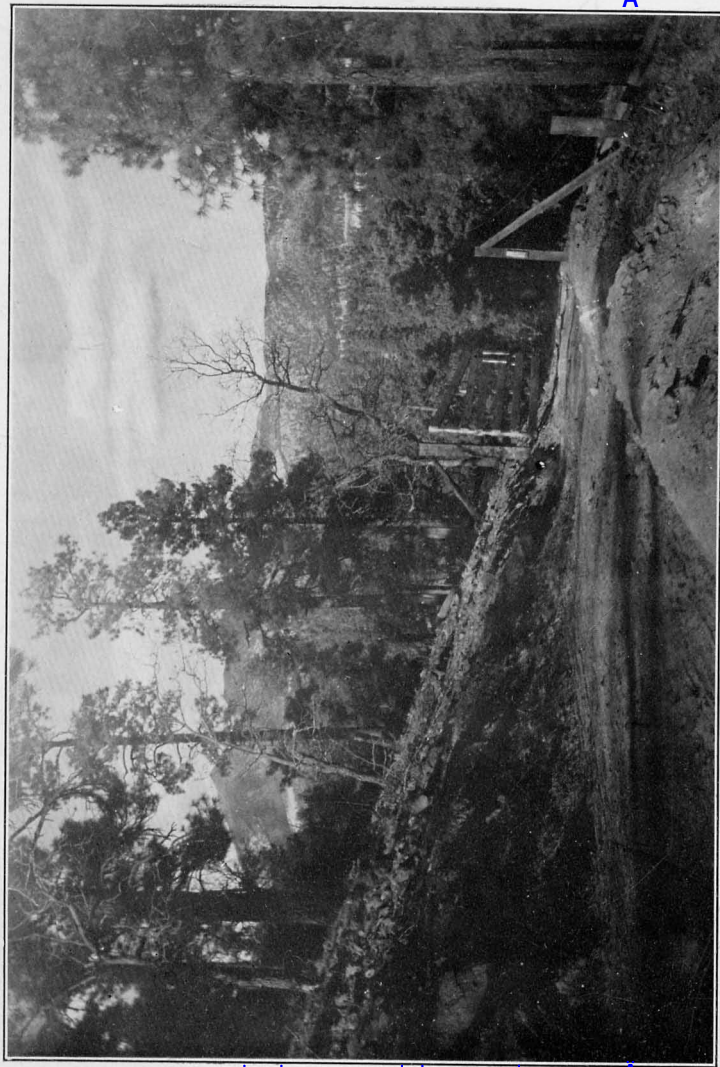
MARS AS THE ABODE OF LIFE



THE MACMILLAN COMPANY
NEW YORK • BOSTON • CHICAGO
ATLANTA • SAN FRANCISCO

MACMILLAN & CO., LIMITED
LONDON • BOMBAY • CALCUTTA
MELBOURNE

THE MACMILLAN CO. OF CANADA, LTD.
TORONTO



ON THE ROAD TO THE OBSERVATORY, FLAGSTAFF, ARIZONA

107

MARS

74852

AS

THE ABODE OF LIFE

BY

PERCIVAL LOWELL, A.B., LL.D.

AUTHOR OF "MARS AND ITS CANALS," ETC.

DIRECTOR OF THE OBSERVATORY AT FLAGSTAFF, ARIZONA; NON-RESIDENT PROFESSOR OF ASTRONOMY AT THE MASSACHUSETTS INSTITUTE OF TECHNOLOGY; FELLOW OF THE AMERICAN ACADEMY OF ARTS AND SCIENCES; MEMBRE DE LA SOCIÉTÉ ASTRONOMIQUE DE FRANCE; MEMBER OF THE ASTRONOMICAL AND ASTROPHYSICAL SOCIETY OF AMERICA; MITGLIED DER ASTRONOMISCHE GESELLSCHAFT; MEMBRE DE LA SOCIÉTÉ BELGE D'ASTRONOMIE; HONORARY MEMBER OF THE SOCIEDAD ASTRONOMICA DE MEXICO; JANSSEN MEDALIST OF THE SOCIÉTÉ ASTRONOMIQUE DE FRANCE, 1904, FOR RESEARCHES ON MARS; ETC., ETC.

ILLUSTRATED

New York
THE MACMILLAN COMPANY

1909

All rights reserved

Ä

COPYRIGHT, 1908,
By THE MACMILLAN COMPANY.

Set up and electrotyped. Published December, 1908. Reprinted
March, 1909.



Norwood Press
J. S. Cushing Co. — Berwick & Smith Co.
Norwood, Mass., U.S.A.