

# OUR OWN COUNTRY.

Descriptive, Historical, Pictorial,

vols

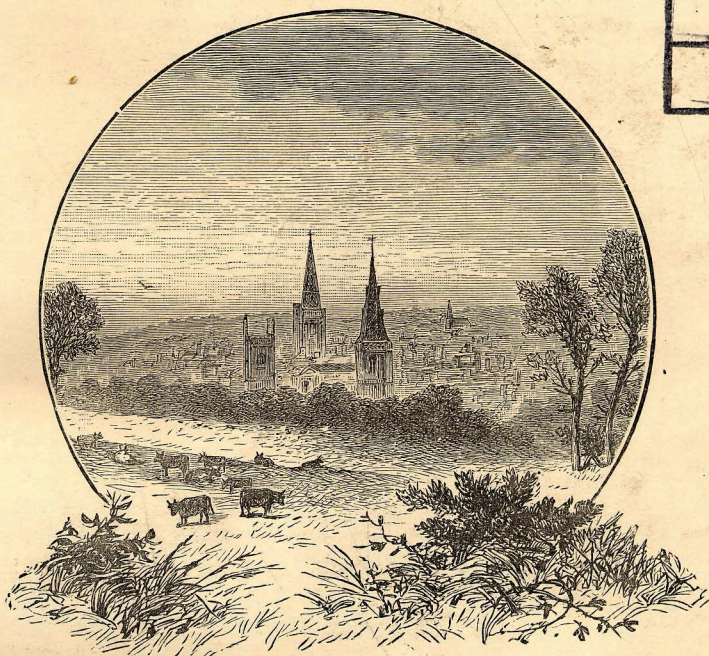
DERBY LONSDALE  
OF HIGHER EDUCATION

ILLUSTRATED.

DISCARD  
BRITISH  
LENDING  
LIBRARY

20 MAR

Wq6



10  
SPECIAL EDITION

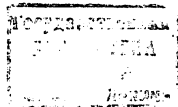
2) VOLUME I.

CASSELL & COMPANY, LIMITED:

LONDON, PARIS & MELBOURNE.

1879  
[ALL RIGHTS RESERVED.]

A



478040-82

# C O N T E N T S.

## SALISBURY PLAIN AND STONEHENGE.

PAGE

Character of the Plain—Old Sarum—Turner and Salisbury Plain—Stonehenge—Etymology—The Great Circle and the Triliths—The Avenue and the Cursus—Traditions and Speculations—Uncertainty of Date and of Purpose—Sepulchral Barrows—Amesbury—Convent and Church . . . . . 1

## LEEDS.

Origin and Early History—Cloth-making—First Factories—Increase in Population—Old Leeds—The Modern Town—Churches—Church of St. John—The Parish Church—The Town Hall—Development of the Woollen Trade in Leeds during the Present Century—The Cloth-mills—Messrs. Marshall's Flax-mill—Great Benefactors of Leeds—Edward Baines and the *Leeds Mercury* . . . . . 18

## THE CINQUE PORTS.

Views from the Castle Hill of Dover—The "Saxon Shore"—The Cinque Ports, their Duties and Privileges—Sandwich—Ebbsfleet—Richborough—The Goodwins—Dover—Hythe—Courts of the Cinque Ports—Rye—Winchelsea—Hastings—Pevensey—Seals of the Cinque Ports . . . . . 32

## DUNFERMLINE.

Journey to Dunfermline from Edinburgh—History of Dunfermline—Malcolm Canmore and St. Margaret—Anglo-Saxon Scotland—The Abbey Church—Comparison with Durham—Date of Nave—Traditions of St. Margaret—The Palace—The Town . . . . . 50

## THE PLYM, FROM THE SOURCE TO PLYMOUTH.

The Rivers of Devonshire—Sources of the Plym—Old English Names—Sheepstor—The Dewerstone—Shaugh Bridge—The Slannings—Bickleigh Vale—Plympton—Old Remains and Memories—Sir Joshua Reynolds—Approach to Plymouth—The Catwater . . . . . 63

## CROWLAND.

The Monasteries of the Fenland—"Courteous Crowland"—Approach to Crowland—Peakirk and St. Pega—The Dykes and Drains of Fenland—Character of the Scenery—The Village of Crowland—The Triangular Bridge—The Remains of the Abbey—Its History—The Cell of St. Guthlac—Abbot Ingulf—Ordericus Vitalis—Waltheof Buried at Crowland—Dissolution of the Abbey—A Warlike Cleric . . . . . 79

## LUDLOW.

Ludlow Castle in its Greatness and its Decay—View of the Town from Whitcliffe—The Welsh Marshes—Early Strongholds—Richard's Castle—Position of Ludlow—Ludford—The Old Bridge—Early History of the Castle—Joyce de Dinan—Fulke Fitz-Warine—The De Lacys and Mortimers—Ludlow a Royal Castle—Prince Arthur—The Earl of Bridgewater Lord President—Description of the Castle—The Great Hall—the Scene of "Comus"—Mary Knoll Valley—Ludlow Church—Old Inns—The "Feathers"—The "Angel"—A Dark Story . . . . . 93

## WEST CORNWALL AND THE LAND'S END.

PAGE

An Ancient Dinner-table, and a Modern One—General Character of West Cornwall—W. Borlase, the Cornish Antiquary—The Hundred of Penwith—Early Accounts—St. Michael's Mount, and its History—St. Michael's Chair—The Tin Traffic—Primitive Hut-villages—Chysoister—Penzance, and its Trade—The Pilchard Fishery—Dolly Pentreath—The Land's End—The Logan—A Lonely Church and its Legend—Cliff Scenery of the Land's End—Old Cornish Churches—St. Sennen—St. Just—Primitive Stone Circles—Zennor and Chywoone . . . . . 110

## EDGEHILL AND NASEBY.

Two Great Battle-fields—Character of the Scenery of Central England—The Ancient Roads—The Battle of Edgehill—March of the King—Edgecot House—The Battle-field—Memorials of the Fight—Position of Naseby—March of Fairfax—The King Warned—Fairfax Forces a Battle—The Battle-field of Naseby—The Battle—Defeat of the Royalists—The Slaughter at Marston Trussell—Naseby at the Present Day—Sulby Hedges—The Church . . . . . 125

## THE CLYDE, FROM ITS SOURCE TO DUMBARTON.

The Sources of the Clyde and the Tweed—Romance of the Upper Clyde—Drochil Castle—Wild Scenery—The First Tributary, the Daer Water—Reminiscences of Wallace—Biggar Water and the "Cadger's Brig"—Bothwell Castle and its Relics—Glasgow and its Industries—Aldclyd—Wallace's Sword—Dumbarton Rock and Castle—The Firth of Clyde . . . . . 140

## BURGHLEY.

Lord Bacon on Building—Burghley his evident Ideal—Grandeurs of the House—The Approach and Entrance-gate—The Interior—The Chapel—The Billiard-room—Portraits—The "Lord of Burghley"—Tennyson's Poem—The Real Facts—The Old Ball-room and its Decorations—Queen Elizabeth's Chamber—The Pagoda-room—A Grand Collection of Portraits—The George IV. Rooms—Royal Visitors at Burghley—The Carlo Dolce Picture—The Gardens—"Capability Brown"—The Town of Stamford—Its Great Antiquity—Once a Resort of Learning—Its Churches—St. Martin's and the Cecil Monuments—The "George" Inn . . . . . 157

## THE WEALD OF KENT.

The "Wealden" Formation—General Character of the Country—The Oaks—Goudhurst and the "Smugglers"—Bedgebury and the Beresfords—Cranbrook and its Industries—Sissinghurst—Sir R. Baker—The Painter's Retreat—Bayham Abbey and its History—The Modern House—Tunbridge—The Castle—Churches and Grammar School—Tunbridge Wells—Penshurst and Sir Philip Sidney—Penshurst Place—The Pictures—The Sidney Family—Hever Castle and the Boleyns—Leeds Castle—Tenterden Steeple and the Goodwin Sands . . . . . 172

## THE DEE.

Beauty of the Dee—Its Course—Derivation of the Name—Deva—Bala Lake—Upper Waters of the Dee—Corwen—The Vale of Llangollen—Plas Newydd and the "Ladies of Llangollen"—Valle Crucis Abbey—Dinas Brân—Viaduct over the Dee—The Hills round Llangollen—Wynnstay—The House and Grounds—Chirk Castle—Ruabon—Wrexham—Bangor—Holt and its Castle—Chester—The "Sands of Dee" . . . . . 186

## WOBURN.

The Town and the Abbey—Origin of the Name—The Old Abbey and its History—Its Dissolution—Building of the New House—Description of the Building—The Portraits—Horace Walpole's Criticisms—Lord William and Lady Rachel—The "Lion's Head" from "Button's"—The Library—Statue-gallery and Green-house—The Park and Gardens—Farms on the Estate—Royal Visits—The Town of Woburn and the Churches—Pedigree of the Russells—Earl Russell—Agricultural Improvements—The Bedford Level . . . . . 207



# CONTENTS.

v

## DUBLIN CITY.

PAGE

The Beginning of Dublin—The Danes—Invasion of Henry II.—Gradual Growth of the Place—Dublin in the time of James II.—Dublin Castle—The First Fortress—Changes in the Building—St. Patrick's Hall—The Chapel Royal—Cork Hill—Bullies and Bravoes in Dublin—Dame's Gate—College Green—The Statue of William III.—Henry Grattan—St. Patrick's—The Earl of Ormonde—Restoration of St. Patrick's—Dean Swift—Francis Street—Meath Street—Thomas Street—The "United Irishmen"—Christ Church, its Early History, Decay, and Restoration—The Monuments . . . . . 222

## SCARBOROUGH AND WHITBY.

Character of the Yorkshire Coast—The Brigantes—Kingdom of Deira—Gregory's Mission—Physical Features of the Country—Scarborough—The Castle—Its Foundation and History—Troubles at Scarborough—Its Fortunes under Elizabeth, and in the Civil Wars—"Siege Pieces"—Account of the Castle—Modern Scarborough—The Spa—"Matthew Bramble's" Visit—Fossils and Pebbles—Filey—The Brig—Whitby—The Abbey—Its History—Abbess Hilda—Fossils—An Eventful Bear-Hunt—Whitby Town—Geological Curiosities . . . . . 240

## BRISTOL.

Early History of Bristol—The Original Settlement—Saxon Bristol—Position of the Original Town—Mercantile Enterprise of Bristol—Foreign Trade—Sketch of Bristol by Macanlay—Improvements in the Seventeenth Century—Bristol Riots—The Cathedral and its History and Principal Features—The Market Cross—St. Mary Redcliffe—Chatterton and his Monument—The Churches of Bristol—Old Streets and Houses—Brandon Hill—Clifton—St. Vincent's Rock—The Avon Bridge—Leigh Wood—Public Buildings in Clifton . . . . . 256

## DERWENTWATER.

English and Foreign Scenery—Charm of the Lake District—Geology of the Country—Borrowdale and its Plumbago—The most Rainy Spot in Britain—Rosthwaite Spring and the Cuckoo—Grange—Traces of Glacial Action—Lodore and its Fall—Derwentwater—An Unlucky Earl—The Lady's Rake—Bassenthwaite—Keswick and its Memories—The "Lake Poets:" Southey, Coleridge—Skiddaw—The Vale of St. John—The "Druid Circle" . . . . . 274

## LIVERPOOL.

Antiquity of Liverpool—Origin of the Name—"The Liver"—Early History of the Town—The Stanleys—Family Feuds—Port of Liverpool—Stringent Rules—First Mayor of Liverpool—Siege in the Civil War—Prince Rupert—Growing Commercial Prosperity—The Slave Trade—Clarkson at Liverpool—Liverpool Worthies—Present Aspect of the Place—New Buildings—The Principal Streets—The Docks and Landing-stages—Custom House and St. George's Hall—Lime Street Station—Sir W. Brown and the Free Library and Museum—Population of Liverpool—Trade and Traffic . . . . . 288

## DUBLIN CITY (*continued*).

St. Patrick's Cathedral—Foundation and Early History—Decay and Restoration—The great Dean of St. Patrick's—The "Coombe" and the French Refugees—Thomas Street—Arrest of Lord Edward Fitzgerald—The United Irishmen—Skinner's Row—Christ Church Cathedral—Famous Relics—Restoration of the Building—Strongbow's Monument—The Old Law Courts—Wine-tavern Street—The Quays and Bridges—Riots on Ormond Quay—Carlisle Bridge—Grafton Street—The Royal Irish Academy—Molesworth Fields—Leinster House—The Royal Dublin Society—Merriion Square—Stephen's Green—Westmoreland and Sackville Streets—The Pro-cathedral—The King's Inns—The Law Courts—Irish Orators—Curran—Sheil—O'Connell—Mary's Abbey—Trade of Dublin—The Custom House—General Resumé . . . . . 303