

GREAT ZIMBABWE  
MASHONALAND, RHODESIA

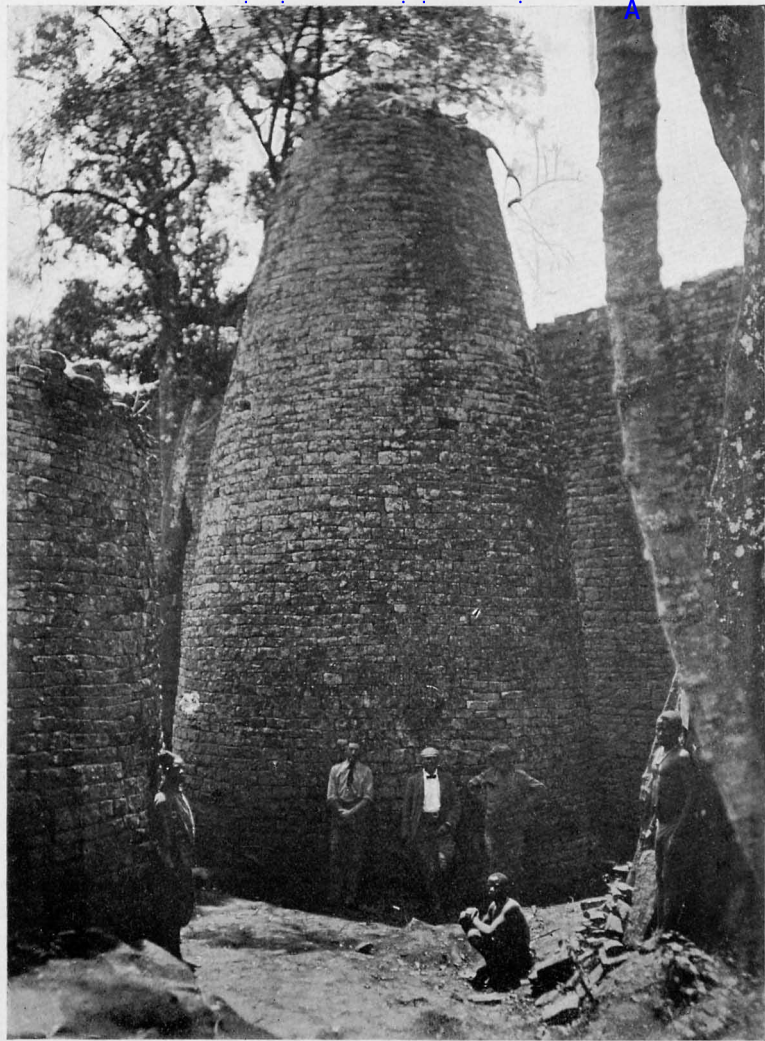
*Price 10s. 6d. net. With seventy illustrations.*

THE  
ANCIENT RUINS OF RHODESIA

BY  
W. G. NEAL AND R. N. HALL

SECOND AND ENLARGED EDITION

LONDON: METHUEN & CO



THE CONICAL TOWER, ELLIPTICAL TEMPLE, GREAT ZIMBABWE

517  
219

# GREAT ZIMBABWE<sup>A</sup>

MASHONALAND, RHODESIA

AN ACCOUNT OF TWO YEARS' EXAMINATION  
WORK IN 1902-4 ON BEHALF OF THE  
GOVERNMENT OF RHODESIA

BY

R. N. HALL, F.R.G.S.

CO-AUTHOR WITH W. G. NEAL OF "THE ANCIENT RUINS OF RHODESIA"

WITH AN INTRODUCTION

BY

PROFESSOR A. H. KEANE, LL.D., F.R.G.S.

WITH TWO HUNDRED ILLUSTRATIONS, MAPS, AND PLANS

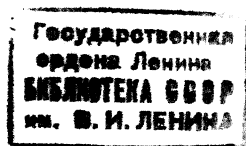
METHUEN & CO.

36 ESSEX STREET W.C.

LONDON

A

First Published in 1905



и 35885 - 49