

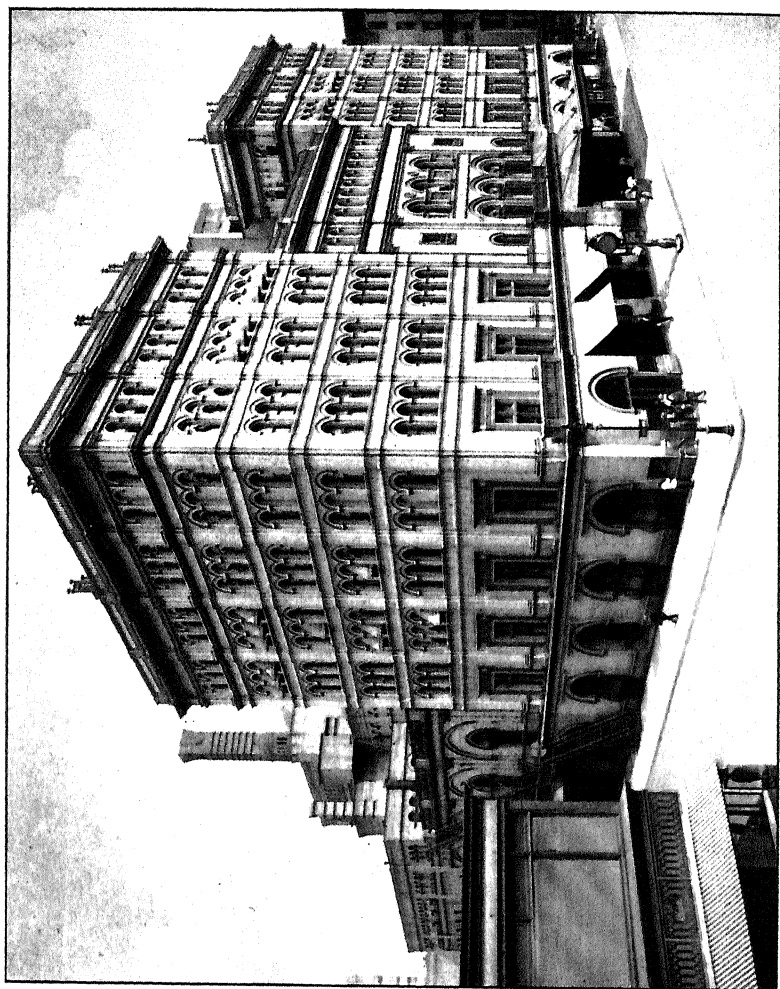
**THE
AMERICAN HISTORY
AND
ENCYCLOPEDIA
OF
MUSIC**

W. L. HUBBARD
EDITOR IN CHIEF

ARTHUR FOOTE
GEO. W. ANDREWS EDWARD DICKINSON
Associate Editors

Special Contributors
G. W. CHADWICK FREDERICK STARR
FRANK DAMROSCH H. E. KREHBIEL
FREDERICK STOCK EMIL LIEBLING
W. J. HENDERSON

IRVING SQUIRE
Toledo
New York Chicago



THE METROPOLITAN, NEW YORK

New York possesses in the Metropolitan an opera house which ranks with the most important in the world. It faces on Broadway and extends from Thirty-ninth Street to Fortieth Street. It is severely plain and practical in design but none the less spacious and imposing. Including the seventy-three boxes it has a seating capacity of 3500, the auditorium being unsurpassed in convenience of arrangement. The stage is one hundred feet in length, ninety feet in depth and one hundred and fifty feet in height. The cost of the Metropolitan was \$1,500,000. The two tiers of boxes and three balconies make in all five galleries. The Metropolitan was opened Oct. 22, 1883, with Henry E. Abbey as manager. "Faust" was sung with Campanini and Nilsson as principals in the cast. The Metropolitan was built and managed by a corporation composed largely of men who were unable to secure boxes at the Academy of Music, then the only opera house in the city.

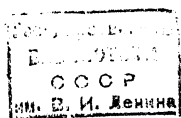
VH 67
THE AMERICAN HISTORY AND ENCYCLOPEDIA
OF MUSIC

361
HISTORY
OF
AMERICAN
MUSIC

WITH
INTRODUCTIONS
BY
GEORGE W. CHADWICK
AND
FRANK DAMROSCH

W. L. HUBBARD
EDITOR

IRVING SQUIRE
Toledo
New York Chicago



u 2718972

Copyright 1908 by
IRVING SQUIRE
Entered Stationers' Hall
LONDON