

THE HANDSOMEST EDITION OF SHAKESPEARE.

Recently published in 8 vols. 8vo, price 4l. 16s. cloth,

A NEW EDITION
OF
SHAKESPEARE'S WORKS,

COMPRISING THE PLAYS AND POEMS,

THE TEXT FORMED FROM

AN ENTIRELY NEW COLLATION OF THE OLD EDITIONS ;

WITH THE

VARIOUS READINGS, NOTES, A LIFE OF THE POET, AND A HISTORY OF THE
EARLY ENGLISH STAGE,

By J. PAYNE COLLIER, Esq. F.S.A.

AUTHOR OF "THE HISTORY OF ENGLISH DRAMATIC POETRY, AND THE STAGE,"

&c. &c.

The Type of this edition has been expressly cast for it, and is the largest
used for Shakespeare's Works for these Twenty Years.

"The most perfect text with the fewest possible notes. Whoever wants to know what Shakespeare wrote must refer to Collier's edition."—*Monthly Mag.*

"Mr. Collier makes out his case well, and from the cogency of his 'Reasons,' must fully convince the Public, that, in spite of the labours of Malone, &c., there is still room for doing much with the works of the immortal poet, which the negligence of former editors, and their inadequate means, have left undone."—*Times*.

"Mr. Collier has brought to his task the aid of great research, discrimination, and intimate knowledge of the true mode of treating his subject."—*Age*.

"A text correct as all known materials, labour, and critical acumen can supply ; a full, yet concise indication of the sources whence the bard drew his plots ; notes, not obtruding explanation, but giving it where wanted, and coming at once to the point ; a type and paper, that, to use a licence of speech, is a nosegay to the eye."—*John Bull*.

. This Work is well adapted for Christmas, Birth-day, and New Year's Gifts.

WHITTAKER AND CO., AVE MARIA LANE ;

AND TO BE HAD, BY ORDER, OF ANY BOOKSELLER.

POTTERY AND PORCELAIN.

* * Many errors must inevitably occur in a work of this kind;
I shall therefore feel much obliged for any corrections or information (to be made use of upon a future occasion) which may be addressed to me at the publisher's.



COLLECTIONS

TOWARDS

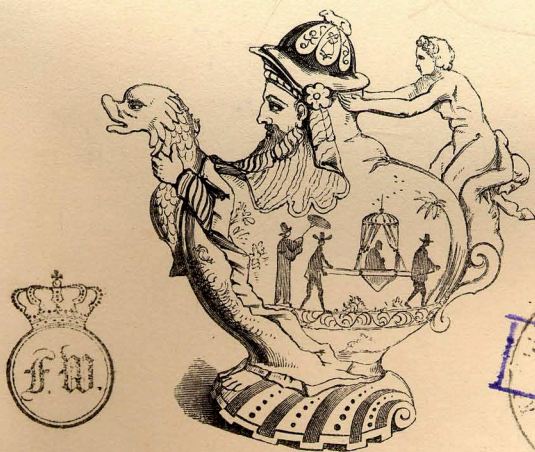
H 537
269 A HISTORY OF

POTTERY AND PORCELAIN,

IN THE 15TH, 16TH, 17TH, AND 18TH CENTURIES :

WITH A DESCRIPTION OF THE MANUFACTURE, A GLOSSARY, AND
A LIST OF MONOGRAMS.

BY JOSEPH MARRYAT.



ILLUSTRATED WITH COLOURED PLATES AND WOODCUTS.

LONDON:
JOHN MURRAY, ALBEMARLE STREET.
1850.