



71 89
✓ 291

LIVERPOOL

BLACK'S GUIDE: BOOKS

✓

39
—
29

3/10/1911

3/10/1911

1/10/1911

BLACK'S
GUIDE TO LIVERPOOL
AND ENVIRONS

Price 1s.

BLACK'S GUIDE
TO THE
ISLE OF MAN

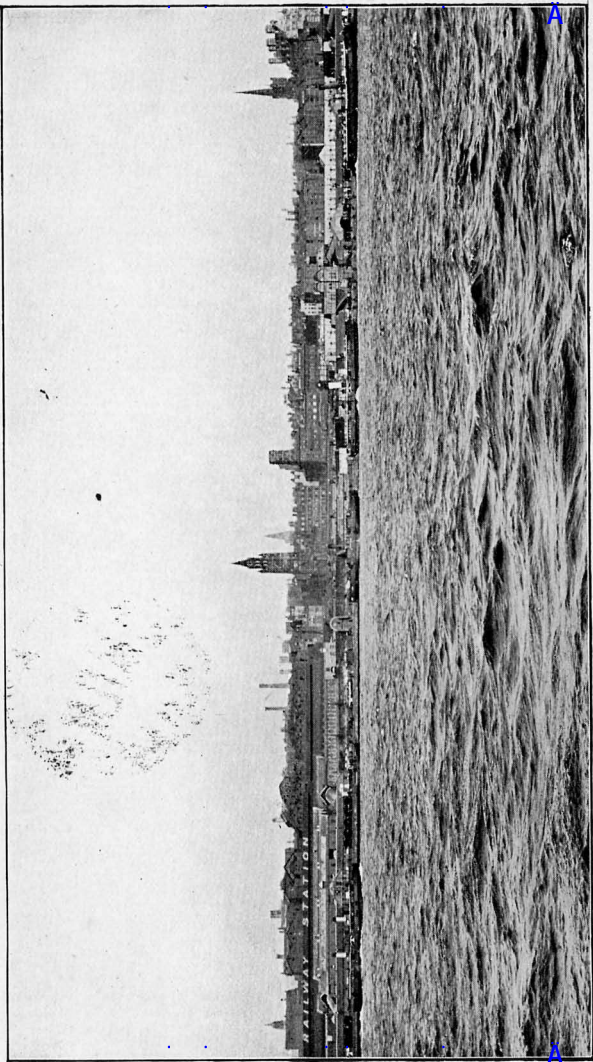
BY

M. J. B. BADDELEY, B.A.

AND

E. D. JORDAN, B.A.

ILLUSTRATED WITH 11 MAPS AND PLANS



THE PORT OF LIVERPOOL.

Photo by Brown, Barnes, & Bell

BLACK'S Ä

GUIDE TO LIVERPOOL

AND ENVIRONS

91 39
—
291

EDITED BY

E. D. JORDAN, B.A.

AND

M. J. B. BADDELEY, B.A.

ELEVENTH EDITION



WITH FIVE MAPS & PLANS & FOUR PAGE VIEWS

LONDON

ADAM AND CHARLES BLACK

1900

Ä