

SHAKESPEARE'S USE OF THE SUPERNATURAL

Shakespeare's Use of the
Supernatural

H 502
286

BEING THE

*Cambridge University Harness
Prize Essay 1907*

BY

J. PAUL S. R. GIBSON B.A.

LATE SCHOLAR OF SIDNEY SUSSEX COLLEGE CAMBRIDGE

"He that will have a cake out of the wheat, must needs tarry
the grinding."

—*Troilus and Cressida*, i. i. 15.

CAMBRIDGE

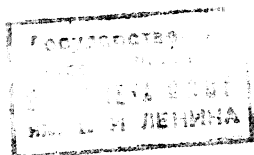
DEIGHTON BELL & CO.

LONDON GEORGE BELL & SONS

MCMVIII

1908

A

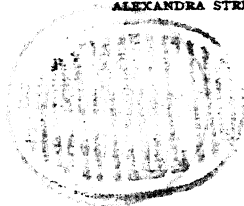


11 18334-49

CAMBRIDGE

PRINTED BY JONATHAN PALMER

ALEXANDRA STREET



A

To
My best Friend
and
Helpmeet

REFERENCES

The Shakespeare references are according to the "Temple Classics Edition" of the plays.

Those from *Doctor Faustus* and *Friar Bacon* are according to the *Old English Drama*, by A. W. Ward.

Those from the *Witch of Edmonton* according to Dekker's Works in the "Mermaid Series."