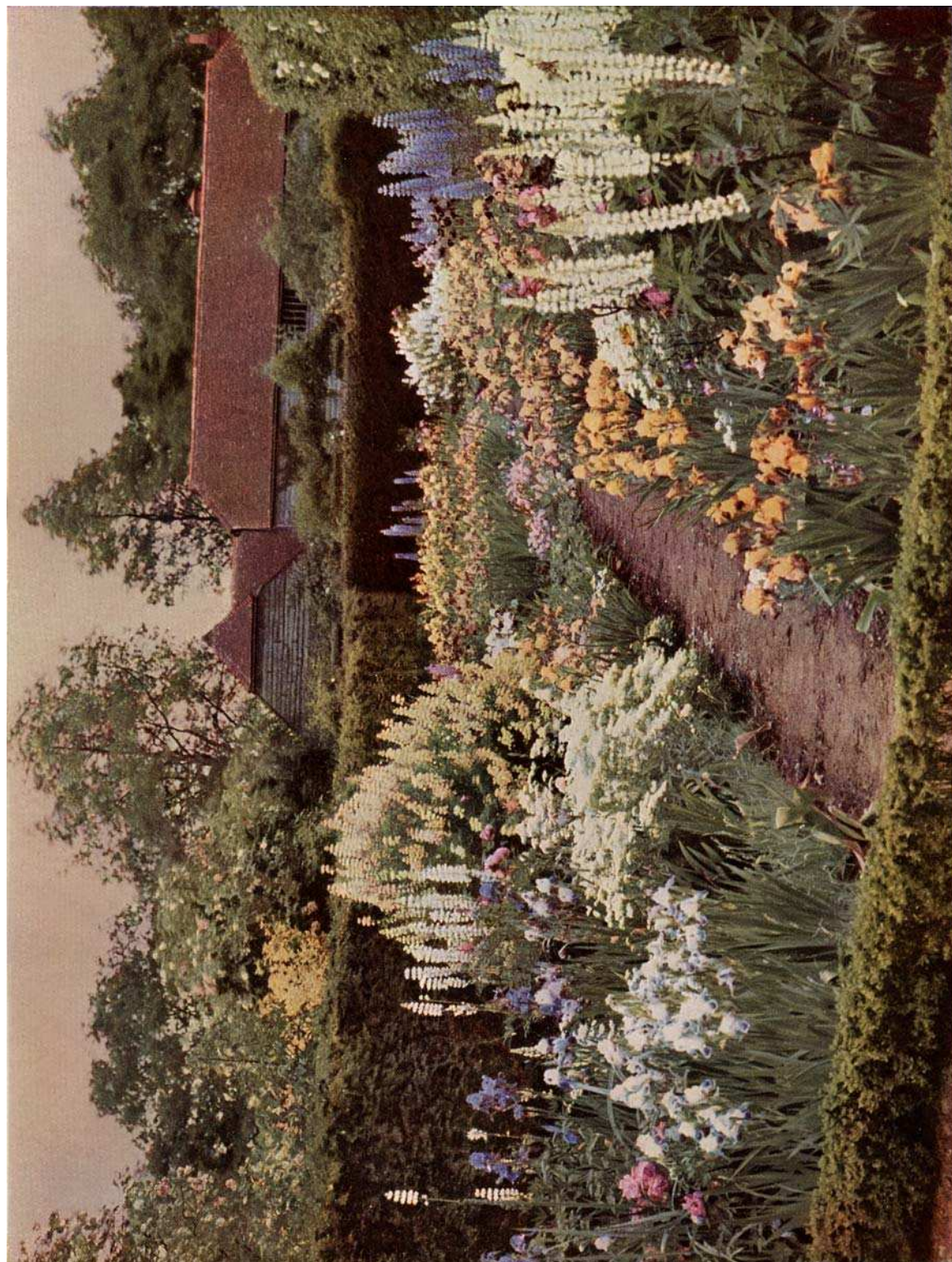


GARDENS FOR SMALL
COUNTRY HOUSES



JUNE BORDERS OF LUPIN AND IRIS IN THE GARDEN AT MUNSTEAD WOOD.

GARDENS FOR SMALL COUNTRY HOUSES

BY

GERTRUDE JEKYLL & LAWRENCE WEAVER



LONDON:

PUBLISHED AT THE OFFICES OF COUNTRY LIFE
20, TAVISTOCK STREET, COVENT GARDEN, AND BY
GEORGE NEWNES, LTD., 8-11, SOUTHAMPTON STREET
STRAND, W.C. NEW YORK: CHARLES SCRIBNER'S SONS