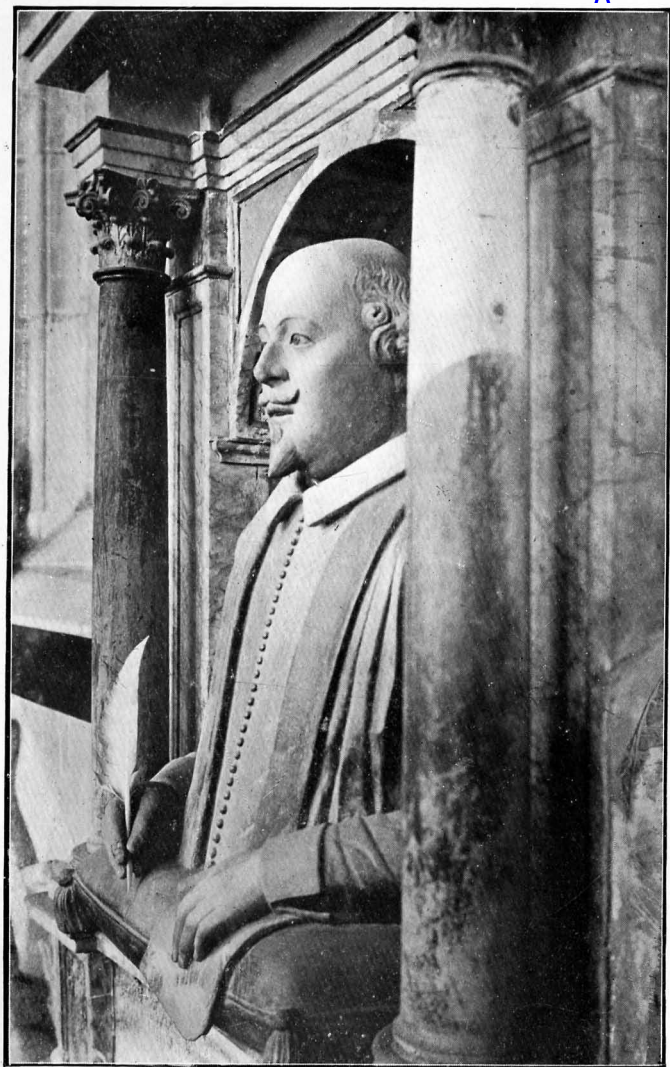


SHAKESPEARE DOCUMENTS

“Myselfe have seene his demeanor no lesse civill,
 than he exelent in the qualitie he professes; besides,
 divers of worship have reported his uprightness of
 dealing, which argues his honesty, and his facetious
 grace in writting, that aprooves his art.”

H. CHETTLE.

“His life was gentle ; and the elements
 So mixed in him that Nature might stand up
 And say to all the world, This was a man.”



SHAKESPEARE'S MONUMENT IN THE CHURCH OF
STRATFORD-ON-AVON

(From a photograph by Harold Baker)

11 294 Ä
CARTAE SHAKESPEAREANAE

SHAKESPEARE DOCUMENTS

A CHRONOLOGICAL CATALOGUE OF EXTANT
EVIDENCE RELATING TO THE
LIFE AND WORKS OF

WILLIAM SHAKESPEARE

COLLATED AND CHRONOLOGICALLY
ARRANGED BY

D. H. LAMBERT, B.A.

SOLICITOR; FORMERLY MEMBER OF THE "NEW SHAKSPERE SOCIETY;" AND
HONORARY MEMBER OF THE NEW YORK SHAKESPEARE SOCIETY



LONDON
GEORGE BELL AND SONS

. . . 1904 Ä

ПОГАШЕНО

Государственная
Библиотека
СССР
им. В. И. Ленина

и 20687-50

CHISWICK PRESS: CHARLES WHITTINGHAM AND CO.
TOOKS COURT, CHANCERY LANE, LONDON.