

Изъ книгъ Графа С. Д. Шереметева I.



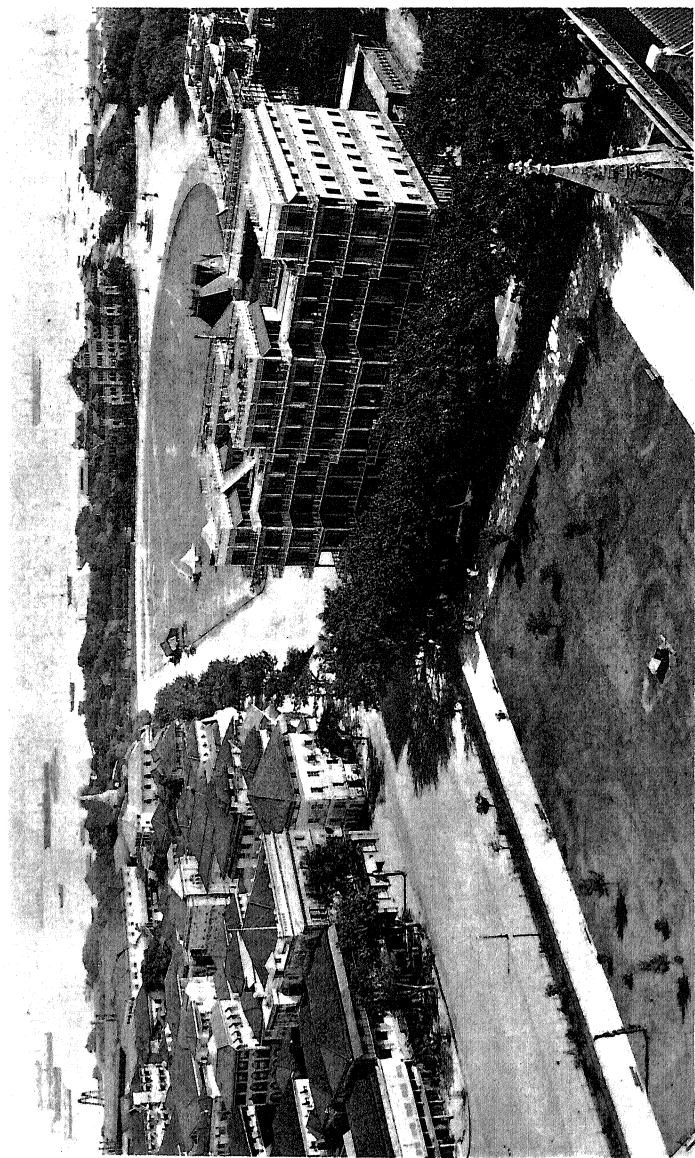
Н.

ШК.

П.

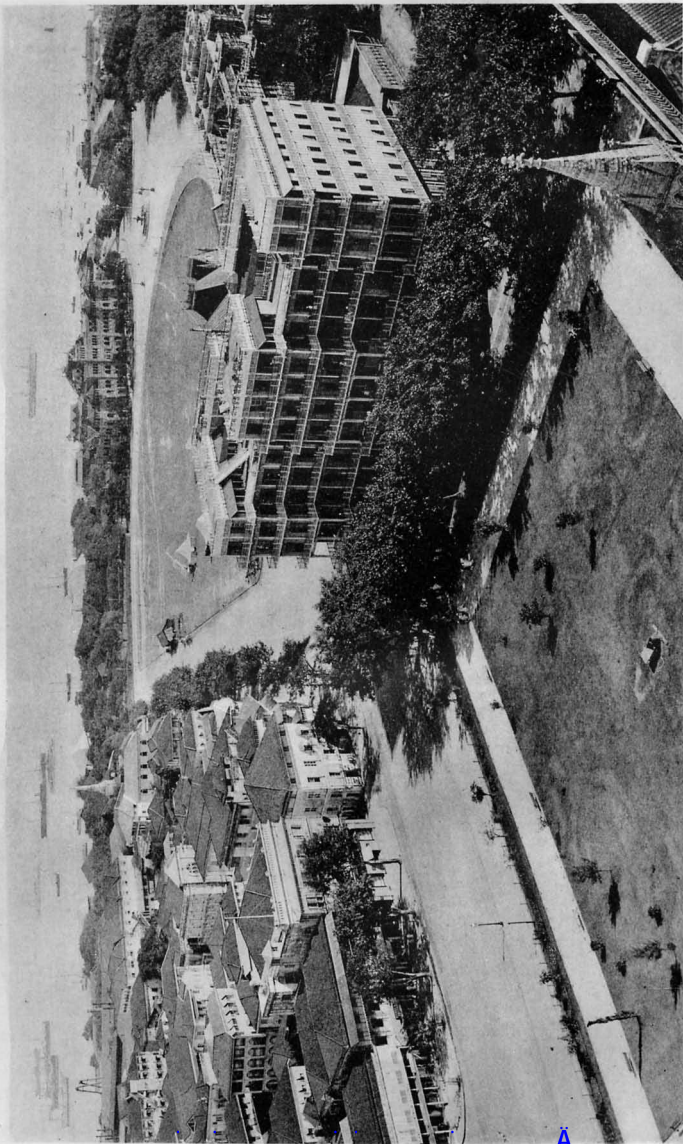
INDIA
PAST AND PRESENT

Frontispiece.



MacLure, Macdonald & Co., Glasgow.

WATSON'S HOTEL, BOMBAY; THE HARBOUR; ISLAND OF ELEPHANTA IN THE DISTANCE.



MacLure, Macdonald & Co., Glasgow.

WATSON'S HOTEL, BOMBAY; THE HARBOUR; ISLAND OF ELEPHANTA IN THE DISTANCE.

A
U 26

INDIA

PAST AND PRESENT

Historical, Social, and Political

BY

JAMES SAMUELSON

Of the Middle Temple, Barrister-at-Law

AUTHOR OF

"ROUMANIA PAST AND PRESENT," "BULGARIA PAST AND PRESENT," ETC.

ILLUSTRATED WITH A RAILWAY MAP OF INDIA; WOODCUTS;
AND COLLOTYPE VIEWS, PORTRAITS, ARCHÆOLOGICAL AND ETHNOLOGICAL
SUBJECTS, FROM FORTY PHOTOGRAPHS BY
BOURNE AND SHEPHERD, CALCUTTA, &c.; *LALA DEEN DAYAL OF INDORE;
S. HORMUSJEE, BOMBAY; MADAME SCARAMANGA, BOMBAY;
AND OTHER WELL-KNOWN PROFESSIONAL AND AMATEUR PHOTOGRAPHERS

Post Tenebras Lux

LONDON
TRÜBNER & CO., LUDGATE HILL

1890

[All rights reserved]

M.T. 5.3.90.
XXII-4556

A