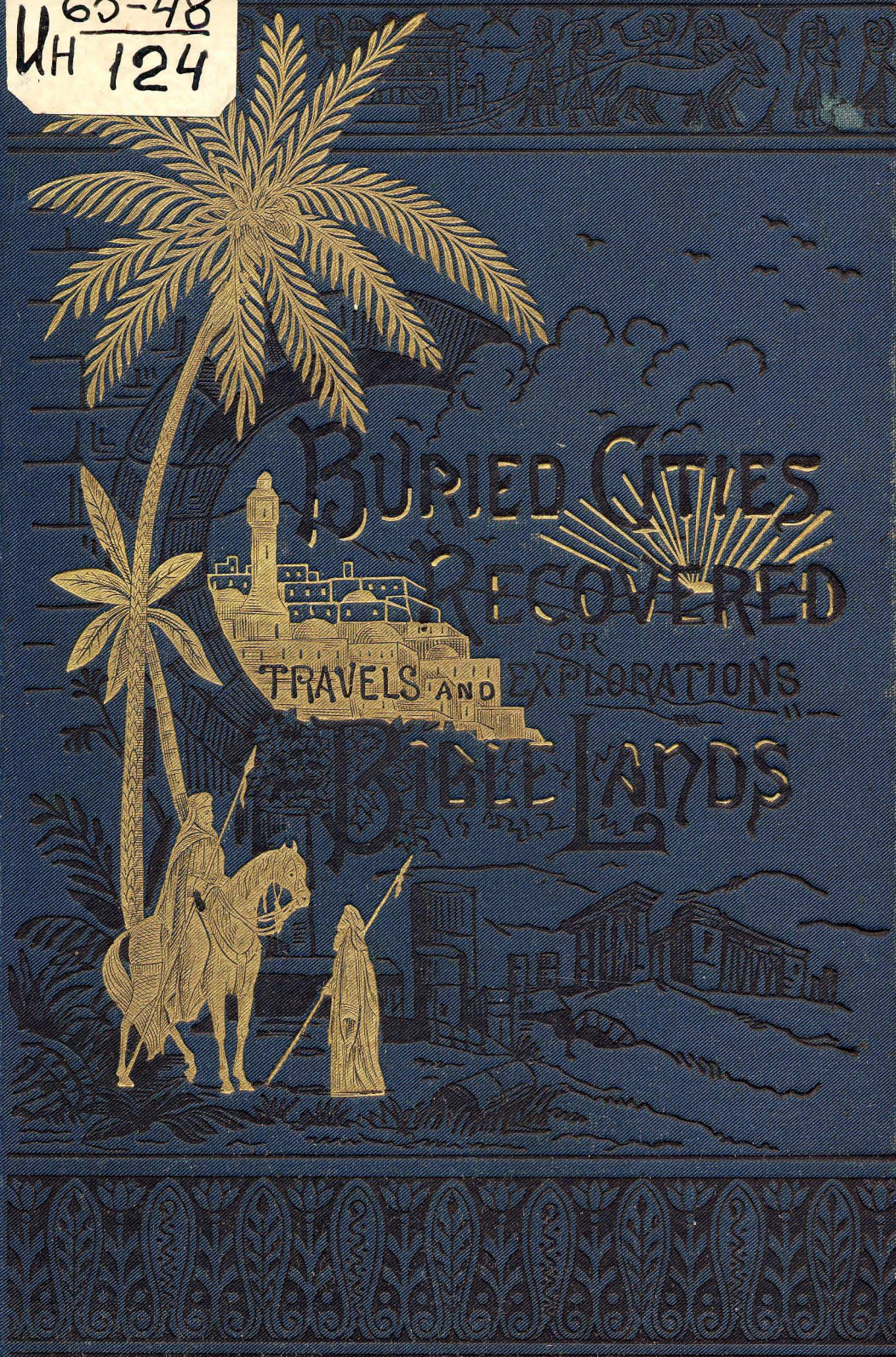
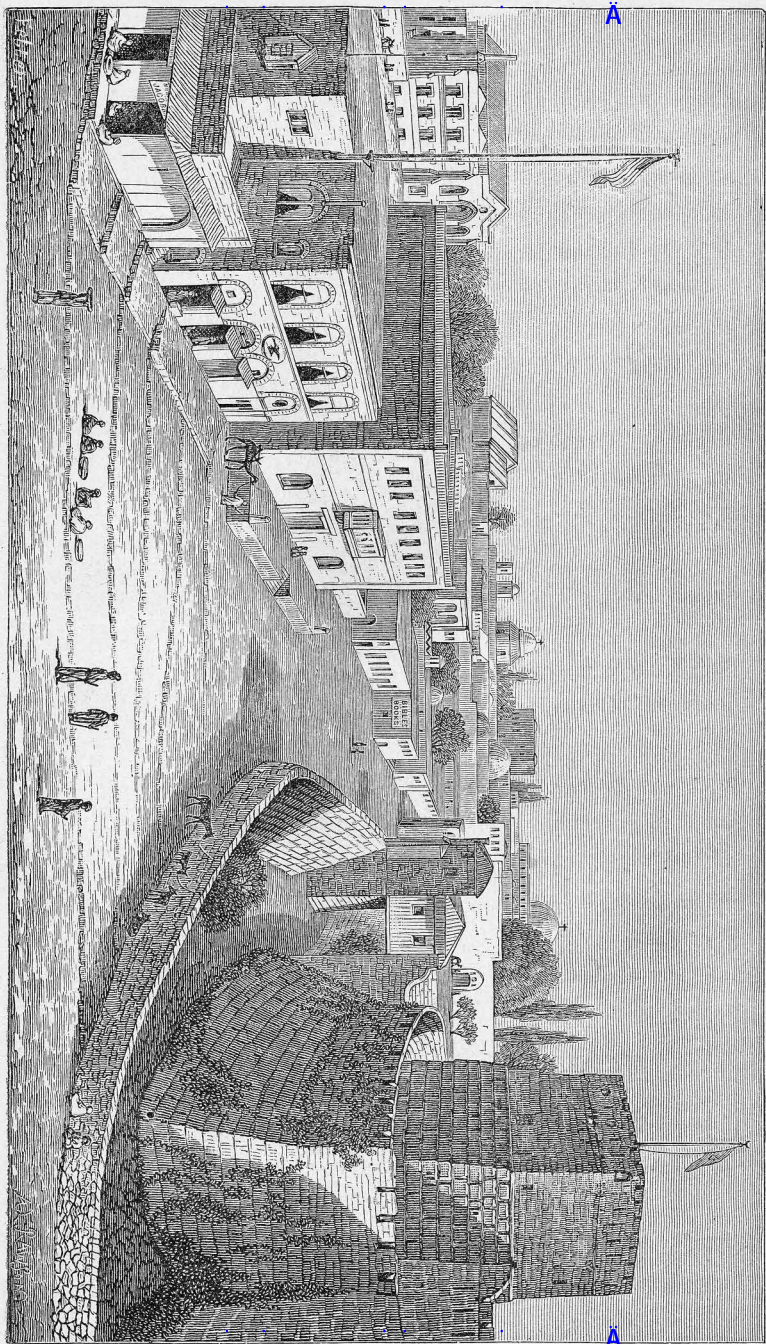


65-48  
UH 124





Mary E. Frost.  
1706 Park Ave.  
Baltimore.  
Md.



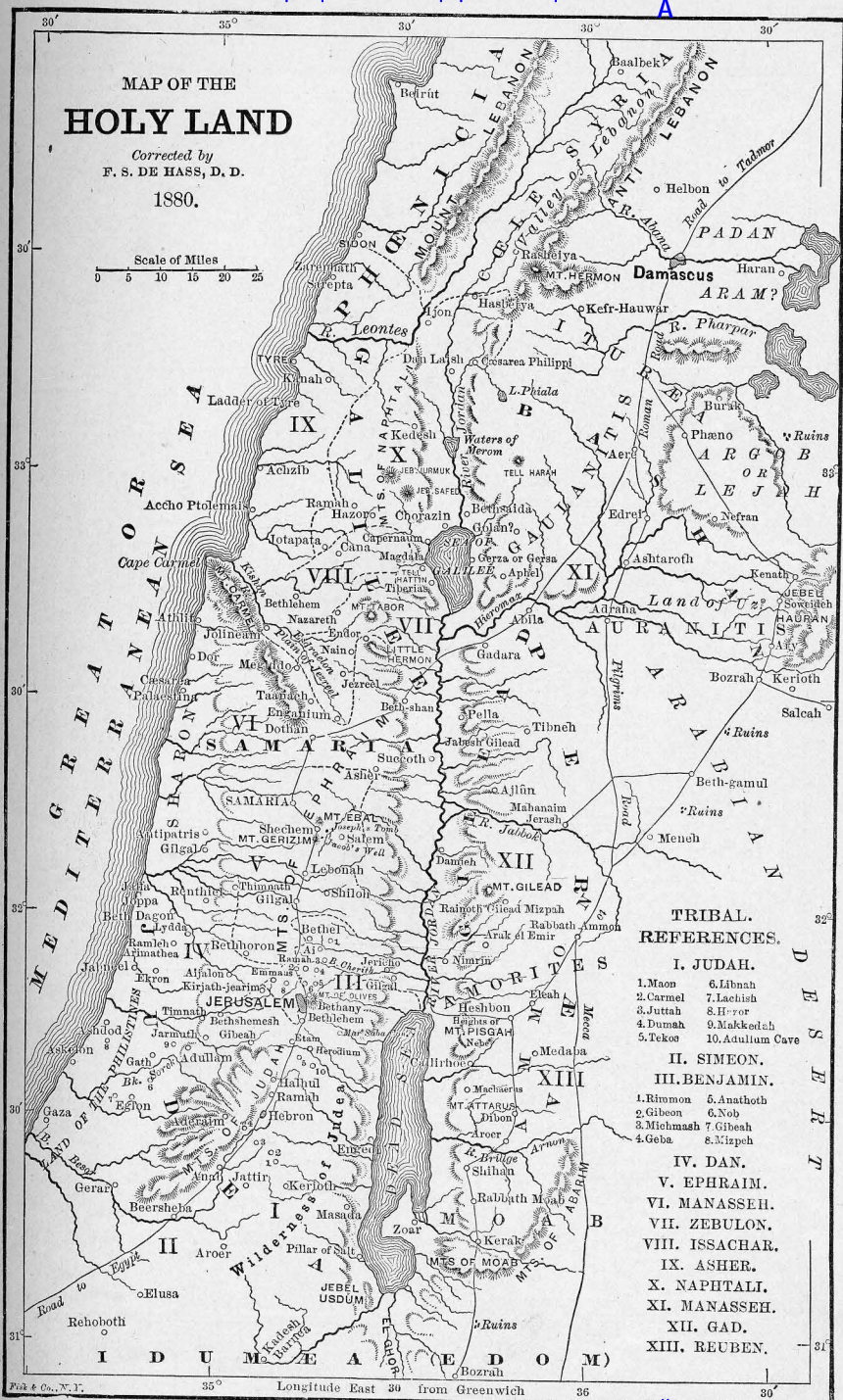
AMERICAN CONSULATE AND TOWER OF DAVID, JERUSALEM.



# MAP OF THE HOLY LAND

Corrected by  
F. S. DE HASS, D. D.  
1880.

Scale of Miles  
0 5 10 15 20 25



## TRIBAL REFERENCES.

### I. JUDAH.

1. Maon
2. Carmel
3. Juttah
4. Dumah
5. Tekoa
6. Bithnah
7. Lachish
8. Horor
9. Makkedah
10. Adullam Cave

### II. SIMEON.

### III. BENJAMIN.

1. Birmon
2. Gibeon
3. Michmash
4. Geba
5. Anathoth
6. Nob
7. Gibeath
8. Mizpeh

### IV. DAN.

### V. EPHRAIM.

### VI. MANASSEH.

### VII. ZEBULON.

### VIII. ISSACHAR.

### IX. ASHER.

### X. NAPHTALI.

### XI. MANASSEH.

### XII. GAD.

### XIII. REUBEN.

