

THE
EDISON & SWAN
UNITED
ELECTRIC LIGHT COMPANY, LIMITED.

Head Offices, Warehouses and Showrooms :

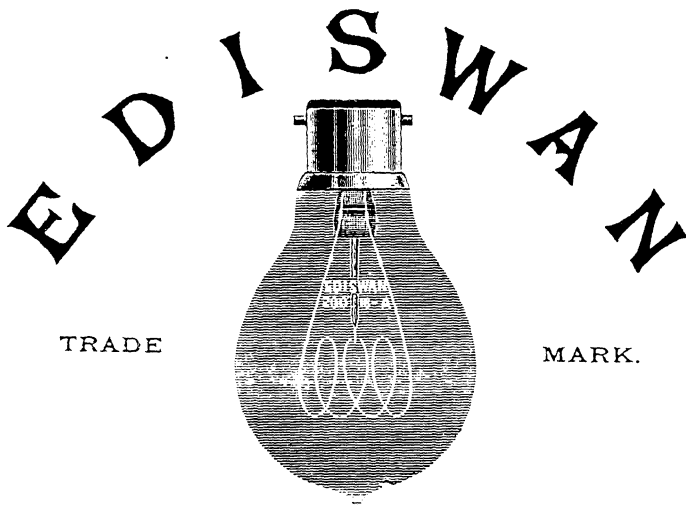
EDISWAN BUILDINGS, 36 AND 37 QUEEN ST., LONDON, E.C.

West End Office and Showroom :

53 PARLIAMENT STREET, WESTMINSTER, S.W.

Supply Store : **COLLEGE HILL, E.C.**

ORIGINAL INVENTORS, PATENTEES AND FOUNDERS OF
THE INCANDESCENT LAMP INDUSTRY.



HIGH VOLTAGE LAMP, HALF SIZE.

THE BEST AND CHEAPEST IN THE END.

*Supplied to the War Office, Colonial Office, Post Office,
Municipal Governments, Corporations, Leading Steamship and Railway Cos.,
Clubs, Hotels, Theatres, &c. &c. &c.*

BRANCHES AND AGENCIES THROUGHOUT THE WORLD.

(i)

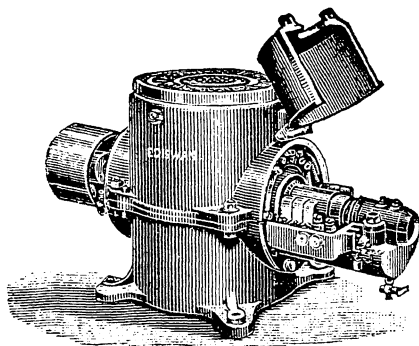
THE

“EDISWAN”

COMPLETELY ENCLOSED

MOTOR

Owing to its High Efficiency
and Reliability, ensures a Monetary Saving on
the year's running.



Catalogues and Specification on Application.

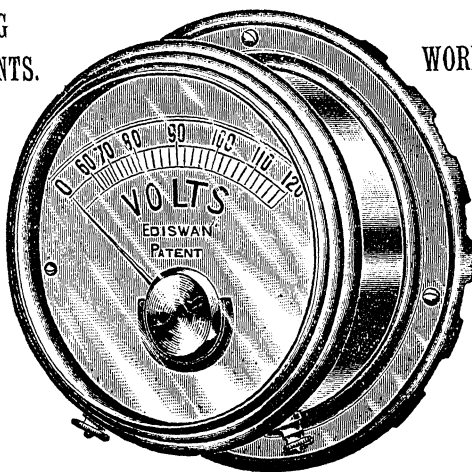
THE
EDISON & SWAN UNITED ELECTRIC LIGHT CO.
LIMITED.

(For Addresses of Showrooms, etc., see p. 1 of these Adverts.)
(ii)

“EDISWAN” (PATENT)
INSTRUMENTS
FOR ALL PURPOSES.

PLATING
INSTRUMENTS.

BEST
WORKMANSHIP.



THESE INSTRUMENTS HAVE BEEN DESIGNED FOR PLATING CIRCUITS.
Scales are open and easily read.

CATALOGUES ON APPLICATION

THE
EDISON & SWAN UNITED ELECTRIC LIGHT CO.
LIMITED.

(For Addresses of Showrooms, etc., see p. 1 of these Advs.)

WORKSHOP RECEIPTS

WORKSHOP RECEIPTS

FOR THE USE OF

MANUFACTURERS, MECHANICS AND
SCIENTIFIC AMATEURS

BY

ERNEST SPON.

SECOND EDITION, REVISED

WITH NEARLY ONE HUNDRED ILLUSTRATIONS



07360

London

E. & F. N. SPON, 125 STRAND

New York

SPON & CHAMBERLAIN, 12 CORTLANDT STREET

1895

A