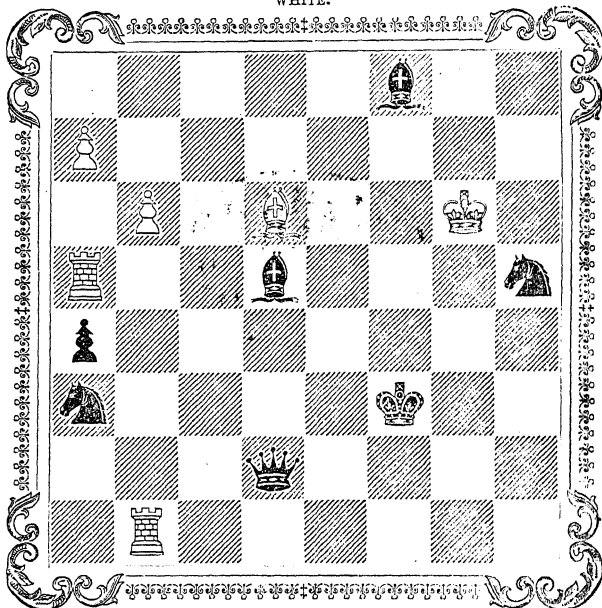




TO
MIRON J. HAZELTINE, Esq.,
 THIS PROBLEM IS INSCRIBED, WITH HIGH REGARD,
 BY HIS FRIEND
THEODORE M. BROWN.

WHITE.



BLACK.

BLACK to play, and compel **WHITE** to mate him, on his King's Rook's eighth square, in *Sixty-two* moves.

H 110
H 316

THE CLIPPER CHESS PROBLEM TOURNAMENT.

TO WHICH A LARGE NUMBER OF ORIGINAL, AND A FEW
SELECTED POSITIONS HAVE BEEN ADDED.

EDITED BY

MIRON J. HAZELTINE, Esq.,

CHIEF EDITOR OF THE "NEW YORK CLIPPER," LATE CHIEF ED. "PORTER'S
SPIRIT OF THE TIMES;" "CHESS MONTHLY," ETC., ETC.

[Faint circular stamp and handwritten signature "W. K. W." are visible above the Latin text.]
"Stadium omnibus unum,
Obscuras reges infimae claudere gentis.

* * * * *
Ecce, erat hinc Lethi facilis via in illa Regia."

—VIDA.

NEW YORK:
ROBERT M. DE WITT, PUBLISHER,
12 FRANKFORT STREET.

453.
OCT 11 1893

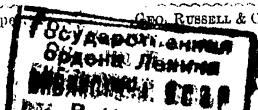
ENTERED according to Act of Congress, in the year 1860, by
 ROBERT M. DE WITT,
 in the Clerk's Office of the District Court of the United States for the Southern
 District of New York.



W. H. Tinson, Stereotype

Geo. Russell & Co., Printers.

47



TO
FRANK QUEEN, ESQ.,

HIS GENEROUS PATRON,
HIS FRIEND TRIED AND TRUE,

THIS LITTLE VOLUME IS
MOST RESPECTFULLY DEDICATED

(with permission)

BY

THE EDITOR