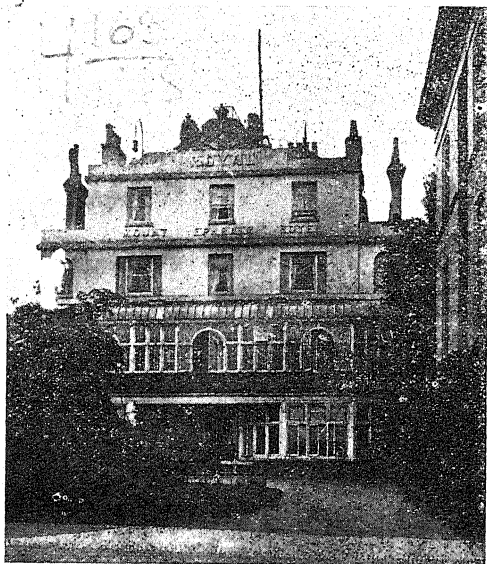


Lovely Tunbridge Wells

An ideal Golfing and Motoring centre. Elevation, 450 feet above sea level. Population 35,703.

"Patients recovering from illness or operation recuperate far more quickly and surely in this healing atmosphere than perhaps in any other English resort."



"THE ROYAL MOUNT EPHRAIM HOTEL" occupies an unrivalled situation on Mount Ephraim, facing due South, and commanding magnificent views of the beautiful scenery for which Tunbridge Wells is so justly famed. It is most comfortably furnished, lighted throughout by electricity, and the accommodation comprises that usual in first-class Hotels. During the winter months the Hotel is heated by a special system of Steam Radiators.

Moderate Tariff. Good Cuisine and Service.

For terms apply to—

A. FRICK, PROPRIETOR

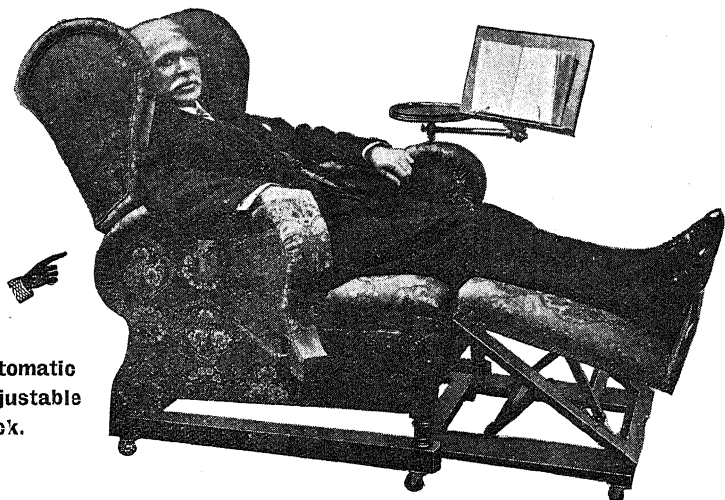
Late Manager Hotel Russell; and
Midland Grand Hotel, London

—TELEGRAMS—
"COMFORT, TUNBRIDGE WELLS."
TELEPHONE - - - No. 75.

1102
1118

FOOT'S

ADJUSTABLE REST-CHAIRS



Automatic
Adjustable
Back.

"THE BURLINGTON" (*Patented*).

Simply press a button and the back declines, or automatically rises, to any position desired by the occupant. Release the button and the back is locked.

The arms open outwards, affording easy access and exit. The Leg Rest is adjustable to various inclinations, and can be used as a footstool. When not in use it slides under the seat.

The Reading Desk and Side Tray are adjustable and removable. The only chair combining these conveniences, or that is so easily adjusted.

The upholstery is exceptionally deep, with spring elastic edges.

Catalogue C 60 of Adjustable Chairs Free.

Patentees and Manufacturers of all kinds of Invalid Furniture, see page xiv.

171-NEW-BOND-STREET
LONDON-W

The Contemporary Review

Edited by The Rev. Dr. Scott Lidgett and Mr. G. P.
Gooch, M.A.

THE CONTEMPORARY REVIEW (one of the oldest of the British Magazines) stands in the front rank of European Reviews. The first writers of our time are among its contributors. It deals with all subjects of current interest :

RELIGION

POLITICS

LITERATURE

PHILOSOPHY

SCIENCE

ART

EDUCATION and

SOCIAL TOPICS

THE CONTEMPORARY REVIEW (monthly) can be obtained from all booksellers, or from the Contemporary Review Company, Ltd., 10, Adelphi Terrace, W.C. Price 2s. 6d. Subscription, post free : 3 months, 8s. 3d. ; 6 months, 16s. 6d. ; 12 months, £1 13s.

A free specimen copy of a recent number will be supplied on receipt of 3d. for postage.

No Club or Library table is complete without

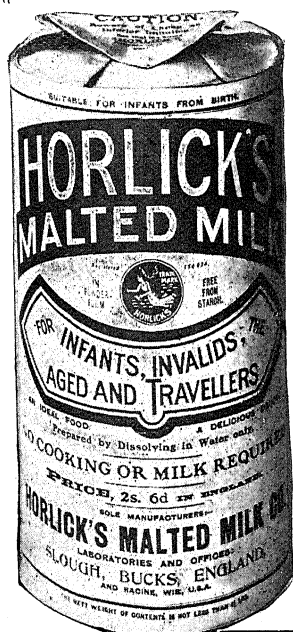
The Contemporary Review

The Medical Who's Who

HORLICK'S MALTED MILK

**MALTED BARLEY,
WHEAT AND MILK
IN POWDER FORM.**

Its value is based not alone on chemical qualities, but also on the possession of certain physical attributes, e.g., palatability, solubility, ease of digestion and assimilation,



etc., qualities moreover which cannot be ignored in the discussion of dietetic values. It is also true that the record of our product as a nutrient, for almost thirty years, bears irrefutable testimony to the genuineness of its physiological worth, and its general excellence as a food product.

Samples to the Profession free by post on application to

**HORLICK'S
MALTED MILK CO.**
SLOUGH, BUCKS, ENG.