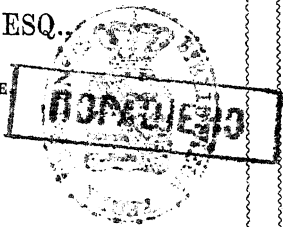


A

SUPPLEMENTARY
CONTRIBUTIONS
TO THE
SERIES OF THE COINS
OF THE
PATAN SULTANS OF HINDUSTAN.

BY
EDWARD THOMAS, ESQ.,
BENGAL CIVIL SERVICE



~~~~~  
[ PRINTED FOR PRIVATE CIRCULATION. ]  
~~~~~

DEHLI:
PRINTED AT THE GAZETTE PRESS, BY A. DE SOUZA, JR.

1852.

A

Ä

SUPPLEMENTARY

CONTRIBUTIONS

TO THE

SERIES OF THE COINS

OF THE

PATAN SULTANS OF HINDUSTAN.

BY

EDWARD THOMAS, ESQ.,

BENGAL CIVIL SERVICE.

~~~~~

[ PRINTED FOR PRIVATE CIRCULATION. ]

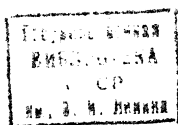
~~~~~

DEHLI:

PRINTED AT THE GAZETTE PRESS, BY A. DESOUZA, JR.

1851.

Ä



и 30932-50

INTRODUCTORY NOTICE.

THE coins herein described, are chiefly taken from the collection of Mr. E. C. Bayley, Bengal Civil Service, who has most liberally placed his entire cabinet at my disposal, to enable me to augment and improve a previously published series of these medals, entitled "The Coins of the Patán Sultáns of Hindustán."

The number of new specimens now available, as well as the direct interest and historical value attaching to many of them, has induced me at once to print this brief notice, in the incomplete and detached form it now appears, in preference to attempting to incorporate these additional materials into a second edition of the original publication, which might involve both delay and uncertainty.

NOTE.—The *second number*, entered after the leading number of each coin, indicates, in cases where no description of the piece is given, the heading in the original work under which the medals now detailed should be classified.

Where a full transcript of any specimen is introduced in the following list, the *second number* determines merely the position, after *that* number, in which the new coin should be inserted in the general detail exhibited in the previous text.

In some instances descriptions of coins, already published, which are specially referred to in the notes on the present supplementary catalogue, have been re-produced entire ; and again, where corrections of previous readings have been found necessary, the complete legends, embodying the revised rendering, have usually been placed under the proper (*second*) number, unaccompanied by further remark.