

370 [**POST FREE**
In Great Britain only] 6d. OR 15 CENTS.

FRENCH'S ACTING EDITION
(Late LACY'S).

**SHE STOOPS
TO CONQUER**

LONDON :
SAMUEL FRENCH, LTD.,
PUBLISHERS,
89, STRAND.

NEW YORK
T. HENRY FRENCH,
PUBLISHER,
26, WEST 22ND STREET.

BELFAST—
J. NICHOLSON, 20, Church Lane.

BIRMINGHAM—
W. H. SMITH & SON, 34, Union St.

BRADFORD—
BILBROUGH & KITCHINGMAN,
5, Dale Street.

BRISTOL—
E. TOLEMAN, 2, Rupert Street,

DUBLIN—
MORROW'S Library, 12, Nassau St.

EDINBURGH—
H. ROBINSON, 111-115, Leith St.

GLASGOW—
WM. LOVE, 221, Argyle Street.

LEEDS—
R. JACKSON, 18, Commercial St.

LIVERPOOL—J. BURKINSHAW,
28-30, Colquitt Street.

MANCHESTER—
JOHN HEYWOOD, Deansgate
and Ridgefield

NEWCASTLE-ON-TYNE—
THOMAS ALLAN, 34, Collingwood
Street.

PLYMOUTH—
BURNELL and HOCKEY,

SHEFFIELD—
GEO. SLATER, 54, Snighill.

BOMBAY— SOUNDY & Co.
THACKER & Co.

CALCUTTA—
THACKER, SPINK & Co.

MADRAS—
HIGGINBOTHAM & Co.,
165, Mount Road.

SIMLA—
SIMLA FANCY REPOSITORY.

CANADA—
R. B. BUTLAND, Toronto.

CAPE OF GOOD HOPE—
J. C. JUTA, Cape Town.

MELBOURNE—
EDGAR DAVIS,
255, Bourke Street, E.

ADELAIDE—
E. S. WIGG & SON.
CAWTHORNE & Co.

NEW ZEALAND—
J. BRAITHWAITE, Dunedin.
G. T. CHAPMAN, Auckland.
S. & W. MACKAY, Wellington.

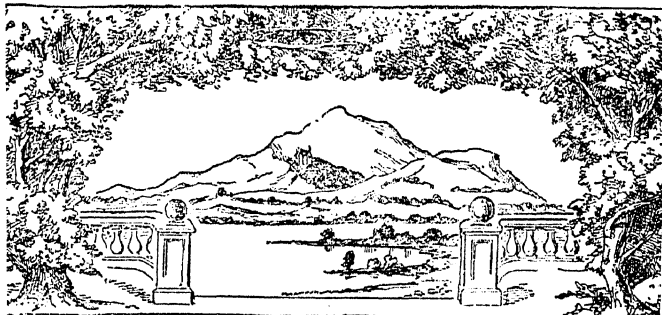
SYDNEY—
S. J. KIRBY,
545, George Street.

(By Order) of all Booksellers in England and Colonies.
NEW DESCRIPTIVE CATALOGUE SENT POST FREE.

NO BOOKS EXCHANGED.

How to Make-up. A practical guide for amateurs. Price 2s.
Private and Stage Dancing. With 24 illustrations. 1s.
Tableaux Vivants, Arranged for private representations. 1s.
Mrs. Jarley's Wax Works. Four Parts. 1s. each.

SCENERY.



With a view to obviate the great difficulty experienced by Amateurs (particularly in country houses) in obtaining Scenery, &c., to fix in a Drawing Room then only by considerable outlay for hire and great damage caused to walls, we have decided to keep a series of mounted Coloured Scenes which are ready for immediate use or they can be had unmounted on thirty sheets of strong paper and can be joined together or pasted on canvas or wood, according to requirement. Full directions, with diagrams shewing exact size of Back Scenes Borders and Wings, can be had free on application. The following four scenes are kept in stock.

GARDEN.—The above is an illustration of this scene. It is kept in two sizes. The size of the back scene of the smaller one is 10 feet long and 6½ feet high, and extends with the wings and border to 15 feet long and 8 feet high. The back scene of the large one is 13 feet long and 9 feet high and extends with the Wings and Border to 20 feet long and 11½ feet high. It is not necessary to have the scene the height of the room, as blue paper to represent sky is usually at the top. Small size, with Wings and Border complete, 63s.; unmounted, 40s.; paper sheets, 30s.; large size, mounted, 84s.; unmounted, 40s. Blue paper sheets, small size. A double quantity would be required if used for the large size.

WOOD.—This is similar in style to the above, only a wood scene is introduced in the centre. It is kept in two sizes, as the previous scene, and paper can be introduced as before indicated. Small size, with Wings and Borders complete, mounted, 63s.; unmounted, 30s. Large size, mounted, 84s.; unmounted, 40s.

FOLIAGE.—This is a sheet of paper on which foliage is drawn and can be repeated and cut in any shape that is required. Small size, 30 inches, 1s. per sheet; large size, 40 inches by 30 inches, 1s. 6d. per sheet.

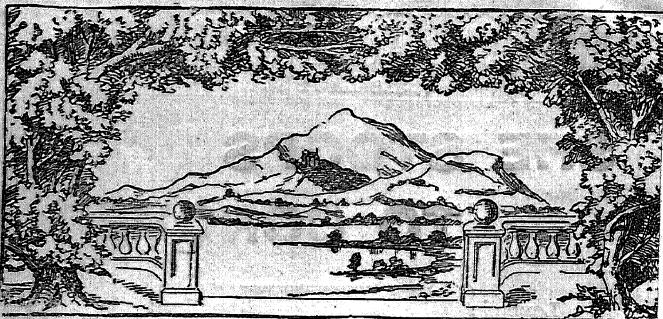
FREE TRUNK.—This is to be used with the foliage and placed at the bottom of the scene.—Price and size same as foliage.

DRAWING ROOM.—This scene is only kept in large size, the back scene is 13 feet long and 9 feet high and extends with the Wings and Borders to 20 feet long and 11½ feet high. In the centre is a French door, leading down to the ground, which could be made practicable if desired. On the left wing is a fireplace with mirror above, and on the right wing is a painting. The whole scene is tastefully ornamented and beautifully coloured, forming a most elegant picture. Should a box scene be required, extra can be had, consisting of doors each side, which could be made practicable, with Border and one set of Wings, mounted, 84s.; unmounted, 40s.; with Border and two sets of Wings, to form box scene, mounted, 105s.; unmounted, 50s.

COTTAGE INTERIOR.—This is also kept in large size only. In the centre is a door leading outside. On the left is a rustic fireplace, and the right centre is a window. On the Wings are painted trees, &c., to complete the scene. A box scene can be made by purchasing a Wings, as before described, and forming doors on each side. Price, with Border and one set of Wings, mounted, 84s.; unmounted, 40s.; with Border and two sets of Wings, to form box scene, mounted, 105s.; unmounted, 50s.

The above can be seen mounted at 89, Strand, London. Full directions accompany each Scene.

SCENERY.



With a view to obviate the great difficulty experienced by Amateurs (particularly in country houses) in obtaining Scenery, &c., to fix in a Drawing Room and then only by considerable outlay for hire and great damage caused to walls, we have decided to keep a series of mounted Coloured Scenes which are ready for immediate use or they can be had unmounted on thirty sheets of strong paper and can be joined together or pasted on canvas or wood, according to requirement. Full directions, with diagrams shewing exact size of Back Scenes, Borders and Wings, can be had free on application. The following four scenes are kept in stock.

GARDEN.—The above is an illustration of this scene. It is kept in two sizes. The size of the back scene of the smaller one is 10 feet long and 6½ feet high, and extends with the wings and border to 15 feet long and 8 feet high. The back scene of the large one is 13 feet long and 9 feet high and extends with the Wings and Border to 20 feet long and 11½ feet high. It is not necessary to have the scene the height of the room, as blue paper to represent sky is usually put at the top. Small size, with Wings and Border complete, 63s.; unmounted, 40s.; paper sheets, 30s.; large size, mounted, 84s.; unmounted, 40s. Blue paper, sheet, small size. A double quantity would be required if used for the large size.

WOOD.—This is similar in style to the above, only a wood scene introduced in the centre. It is kept in two sizes, as the previous scene, as paper can be introduced as before indicated. Small size, with Wings and Borders complete, mounted, 63s.; unmounted, 30s. Large size, mounted, 84s.; unmounted, 40s.

FOLIAGE.—This is a sheet of paper on which foliage is drawn which can be repeated and cut in any shape that is required. Small size, 30 inches by 19 inches, 1s. per sheet; large size, 40 inches by 30 inches, 1s. 6d. per sheet.

FREE TRUNK.—This is to be used with the foliage and placed at the bottom of the scene.—Price and size same as foliage.

DRAWING ROOM.—This scene is only kept in large size, the back scene is 13 feet long and 9 feet high and extends with the wings and Borders to 20 feet long and 11½ feet high. In the centre is a French window, leading down to the ground, which could be made practicable if desired. On the left wing is a fireplace with mirror above, and on the right wing is a painting. The whole scene is tastefully ornamented and beautifully coloured, forming a most elegant picture. Should a box scene be required, extra can be had, consisting of doors each side, which could be made practical, with Border and one set of Wings, mounted, 84s.; unmounted, 40s.; with Border and two sets of Wings, to form box scene, mounted, 105s.; unmounted, 50s.

COTTAGE INTERIOR.—This is also kept in large size only. In the centre is a door leading outside. On the left centre is a rustic fireplace, and the right centre is a window. On the Wings are painted trees, &c., to complete the scene. A box scene can be made by purchasing a Wings, as before described, and forming doors on each side. Price, with Border and one set of Wings, mounted, 84s.; unmounted, 40s.; with Border and two sets of Wings, to form box scene, mounted, 105s.; unmounted, 50s.

The above can be seen mounted at 89, Strand, London. Full directions accompany each Scene.

A

SHE STOOPS TO CONQUER.

COMEDY.

IN THREE ACTS.

BY

OLIVER GOLDSMITH.

LONDON:
SAMUEL FRENCH, LTD.,
PUBLISHERS,
89, STRAND.

NEW YORK:
T. HENRY FRENCH,
PUBLISHER,
26, WEST 22nd STREET

A

performed at Covent Garden March 15th, 1773.

Characters.

	<i>Covent Garden, 1773.</i>	<i>Haymarket, 1856.</i>
SIR CHARLES MARLOW	MR. GARDNER.	MR. ROGERS.
HARDCASTLE	MR. SHUTER.	MR. CHIPPENDALE.
YOUNG MARLOW	MR. LEE LEWIS.	MR. HOWE.
HASTINGS	MR. DU BELLAMY	MR. E. VILLIERS.
TONY LUMPKIN	MR. QUICK.	MR. COMPTON.
STINGO	...	MR. CULLENFORD.
DIGGORY	...	MR. CLARKE.
ROGER	...	MR. WEATHERSEY.
RALPH	...	MR. RUSSELL.
GREGORY
TOM TWIST	...	MR. WETTIN.
JACK SLANG	...	MR. COR.
TOM TICKLE
JEREMY	...	MR. BRAD.
MAT MUGGINS	...	MR. EDWARDS.
SERVANT
MRS. HARDCASTLE	MRS. GREEN.	MRS. POYNTER.
MISS HARDCASTLE	MRS. BULKLEY.	MISS REYNOLDS.
MISS NEVILLE	MRS. KNIVETON.	MISS A. VINING.
MAID	...	MISS ELLI.

Costumes.—(PERIOD ABOUT 1770.)

SIR CHARLES.—Long riding coat, trimmed with gold lace, top boots, powdered wig and queue, three-cornered hat with gold lace, white cravat.

HARDCASTLE.—Plain plum-coloured cloth suit, grey silk stockings, shoes and buckles. *Second Dress:* Long coat with cape, three-cornered hat, brown George wig, white cravat.

MARLOW.—Green body coat, wide lappels and skirts, trimmed with gold lace; white satin embroidered waistcoat, leather tights, and top boots; three-cornered laced hat, hair powdered and tied at back with black ribbon and rosette, white cravat with short laced ends.

HASTINGS.—The same, but of different colour.

TONY.—Scarlet hunting frock, long white waistcoat, leather breeches, striped stockings, and shoes with buckles. *Second Dress:* Top boots, and hunting cap; red wig, hair tied in a queue.

DIGGORY and SERVANTS.—Old-fashioned liveries.

STINGO.—Plain cloth suit.

GUESTS.—Shabby suits.

MRS. HARDCASTLE.—Figured silk open dress, stomacher, short sleeves with hanging lace sleeves, mittens, satin petticoat, high-heeled shoes, powdered hair, and large cap trimmed with broad coloured ribbons and flowers; hoop. *2nd Dress:* Capuchin and hood.

MISS HARDCASTLE.—White figured silk and black silk scarf, folded and the shoulders, and tied behind at the waist; hair in ringlets, and large flat straw hat, trimmed with ribbons. *Second Dress:* Plain k, with neat apron, and small cap; mittens.

MISS NEVILLE.—Pink silk, like Miss Hardcastle's first dress,

MAID.—Plain figured chintz, apron and cap.